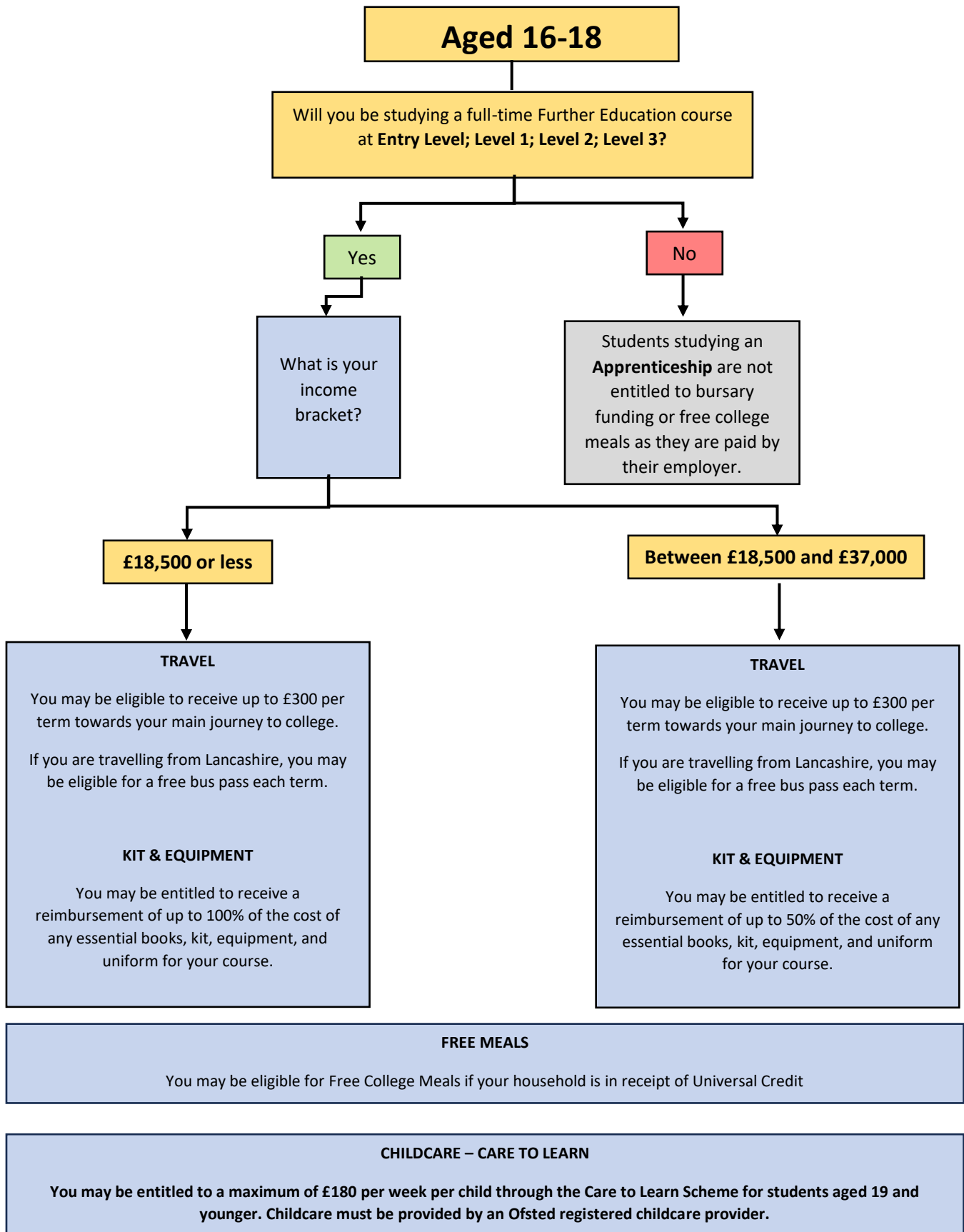


# STUDENT BURSARY FLOW CHART 2026-2027

Follow the flowchart to see what financial support you could be eligible for while studying at Craven College.

Once enrolled onto a course, students can apply for bursary financial support via

<https://craven.paymystudent.com/portal/>



## **DISCRETIONARY LEARNER SUPPORT FUND**

This bursary is available to help with the cost of essential books, kit, equipment, and uniform. Assistance from this fund is available to students with a household income of £37,000 (gross) per year or below.

## **FREE MEALS**

Students with a household in receipt of Universal Credit will be eligible for free meals on the days they attend college.

## **CHILDCARE**

The Care to Learn Scheme offers childcare support to students younger than 20. The Care to Learn Scheme can provide a maximum of £180 per week per child. Childcare must be provided by an Ofsted registered childcare provider.

## **TRAVEL BURSARY**

Craven College offers a Travel Bursary for students with a household income of £37,000 (gross) or less. If eligible, Craven College will pay a maximum of £300 per term for the main journey or supply a free termly bus pass to students if they are travelling from certain areas of Lancashire. For more information, please refer to our [Travel Support – Craven College](#) page.

## **HOW TO APPLY**

Once enrolled onto a course, students can submit a bursary application by following this link <https://craven.paymystudent.com/portal/>

To complete the bursary application, you will need to provide details of your income and provide evidence to support this. The evidence will need to include copies of wage slips from employment or self-employment and/or any benefits that you are receiving.

Once your application is approved, any payments agreed will be paid by BACS directly into the bank account specified on your application.

If you are eligible for free meals, a credit of £4.65 will be added to your college ID each day you are in college.