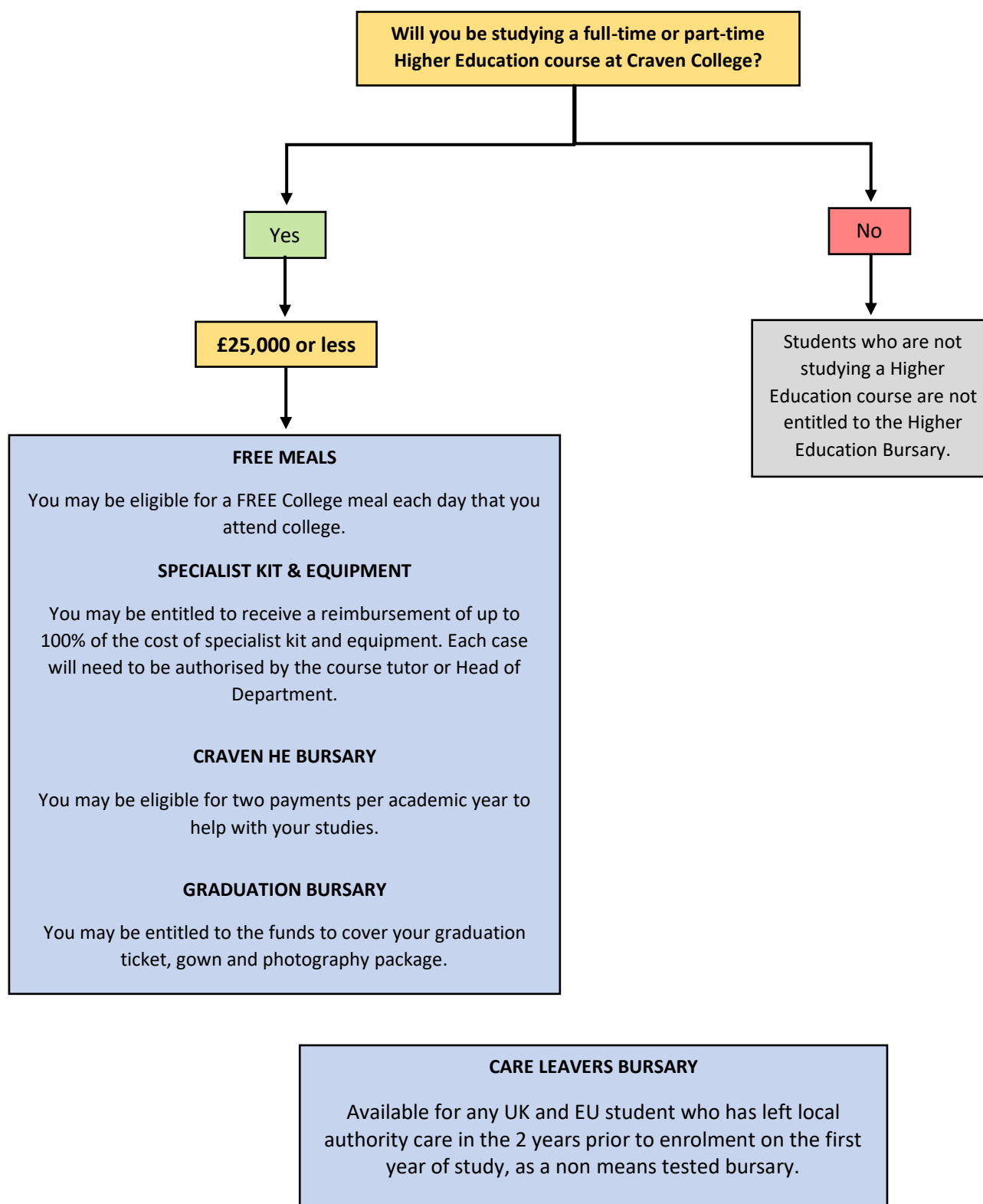


# CRAVEN COLLEGE HIGHER EDUCATION BURSARY FLOW CHART

Follow the flowchart to see what financial support you could be eligible for while studying at Craven College.

Once enrolled onto a course, students can apply for bursary financial support via

<https://craven.paymystudent.com/portal/>



## **FINANCIAL SUPPORT FOR ALL HE STUDENTS WITH HOUSEHOLD INCOME UNDER £25,000**

Financial support is available to all Higher Education students with a household income of £25,000 or less. Part time students would be eligible for the same funding pro-rata over their course. Thresholds are reviewed annually and will align with [SFE Parental contribution Threshold \(£25,000\)](#). All bursaries excluding the Care leaver's bursary need to be applied for annually.

### **FREE MEALS**

You may also be entitled to free College meals if your household income is below £25,000.

### **SPECIALIST KIT AND EQUIPMENT BURSARY**

This bursary is available to refund 100% of a purchase up to £400, if your household income is below £25,000. The special kit and equipment must be approved by the course tutor or Head of Department and an application submitted before purchase.

### **CRAVEN HE BURSARY**

This £800 bursary is made in two 2 instalments of £400 in October and February, if your household income is below £25,000. The February payment is dependent on attendance of 90% (unless evidence of extenuating circumstances supplied).

### **GRADUATION BURSARY**

This bursary covers the graduation ticket, gown and photography package, if your household income is below £25,000.

## **FINANCIAL SUPPORT FOR CARE LEAVERS**

### **CARE LEAVERS BURSARY**

This bursary is paid to students that left local authority care in the 2 years prior to enrolment. This is a non means tested bursary of £800 and will be paid for each year of study, payable in two instalments in October and February. The February payment is dependent on attendance of 90% (unless evidence of extenuating circumstances supplied).

## **FINANCIAL SUPPORT AVAILABLE TO ALL HE STUDENTS**

### **FREE BREAKFASTS**

On the Aireville Campus, all students arriving before 9:00am each day can enjoy a FREE healthy breakfast in our Café.

### **HE HARDSHIP FUND**

This fund is a one-off discretionary payment of up to £300 which is decided on presented evidence and is open to all HE students.

## **FINANCIAL SUPPORT FOR FOR STUDENTS STUDYING EARLY YEARS COURSES**

### **ALIX COUGHLIN PROFESSIONAL DEVELOPMENT SCHOLARSHIP**

This fund is to support students with the costs of a visit, conference or educational event or for help towards the cost of a training course that would enhance professional development. Payments could cover travel, event fees and/or course costs. Scholarship payments are not automatic and may partially or fully cover the cost. Payments will be awarded on an individual basis following assessment of an application form. The application requires an outline of the benefits of the course or visit to your own professional development.

### **ALIX COUGHLIN HARDSHIP FUND**

This fund will support students to cover one off costs that are resulting in hardship. The payment is decided on presented evidence and can be for amounts up to £600.

**If you require any help applying for financial support or require more information, please contact Student Services on: [bursaries@craven-college.ac.uk](mailto:bursaries@craven-college.ac.uk)**