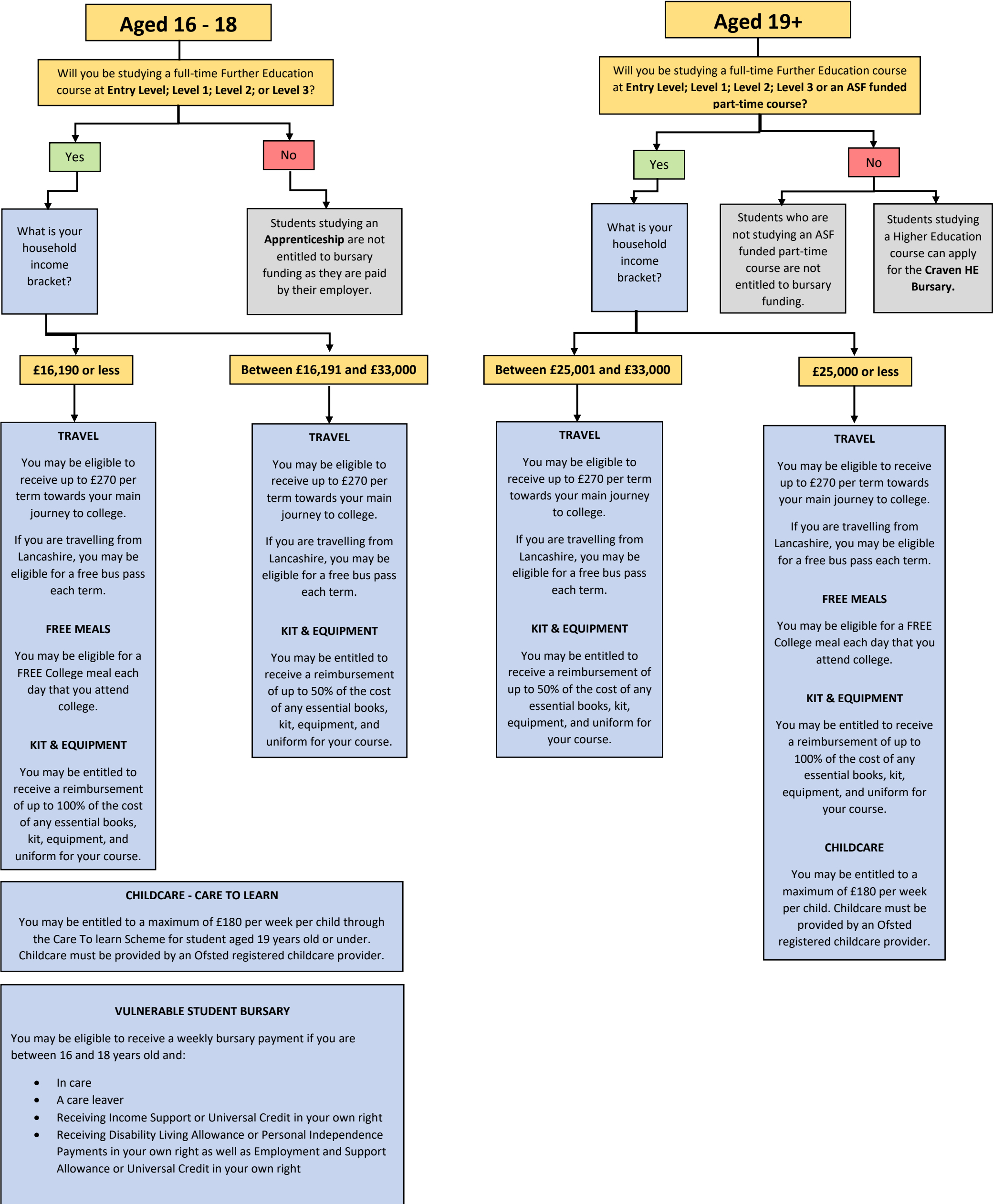


STUDENT BURSARY FLOW CHART

Follow the flowchart to see what financial support you could be eligible for while studying at Craven College.

Once enrolled onto a course, students can apply for bursary financial support via <https://craven.paymystudent.com/portal/>



FINANCIAL SUPPORT FOR 16 – 18 YEAR OLDS

FREE BREAKFAST & MEALS On the Aireville Campus, all students arriving before 9:00am each day can enjoy a FREE healthy breakfast in our Café. You may also be entitled to free College meals through a government scheme. Students will need to complete a Bursary application form and provide recent evidence of qualifying benefits.	DISCRETIONARY LEARNER SUPPORT FUND This bursary is available to help with the cost of essential books, kit, equipment, and uniform. Assistance from this fund is available to students with a household income of £33,000 (gross) per year or below.
CHILDCARE Craven College will pay a maximum of £180 per week per child through the Care To learn Scheme for student aged 19 years old or under. Childcare must be provided by an Ofsted registered childcare provider.	VULNERABLE STUDENT BURSARY There is Vulnerable Study Bursary of up to £1,200 a year for students who are between 16 and 18 years old and are: <ul style="list-style-type: none"> • In care • A care leaver • Receiving Income Support or Universal Credit in your own right • Receiving Disability Living Allowance or Personal Independence Payments in your own right as well as Employment and Support Allowance or Universal Credit in your own right

Craven College offers a Travel Bursary for students with a household income of £33,000 (gross) or less. If eligible, Craven College will pay a maximum of £270 per term for the main journey or supply a free termly bus pass to students if they are travelling from certain areas of Lancashire. For more information, please refer to our [Travel Support – Craven College](#) page.

FINANCIAL SUPPORT FOR 19+

FREE BREAKFAST & MEALS On the Aireville Campus, all students arriving before 9:00am each day can enjoy a FREE healthy breakfast in our Café. Students with a household income of £25,000 or less will be eligible for free meals on the days they attend college.	DISCRETIONARY LEARNER SUPPORT FUND This bursary is available to help with the cost of essential books, kit, equipment, and uniform. Assistance from this fund is available to students with a household income of £33,000 (gross) per year or below.
CHILDCARE Craven College can offer childcare support to students who have a household income of £25,000 or less. Craven College will pay a maximum of £180 per week per child. Childcare must be provided by an Ofsted registered childcare provider.	

Please review your entitlements above and apply for bursary financial support via <https://craven.paymystudent.com/portal/>

Please send any bursary queries to bursaries@craven-college.ac.uk